

TYPES OF EUROTEC CONNECTIONS

NTI # 008

The EUROTEC standard connection is a compact solution in brass, male threaded with a hole used for venting or draining. It has a cylindrical shape which allows it not to take up excessive bulk unlike a hexagonal attachment, but it is still equipped with two millings on the sides which allow it to be gripped using a wrench for correct tightening. In addition to the standard one we have various types of connections described below:

- Threaded collar flanges EN 1092-1 Tipo:13 B1 - PN16
- Collar weld flanges EN 1092-1 Tipo:11 B1 - PN40
- Free flanges EN 1092-1 Tipo:02A - PN16
- Victaulic
- Female thread
- To weld

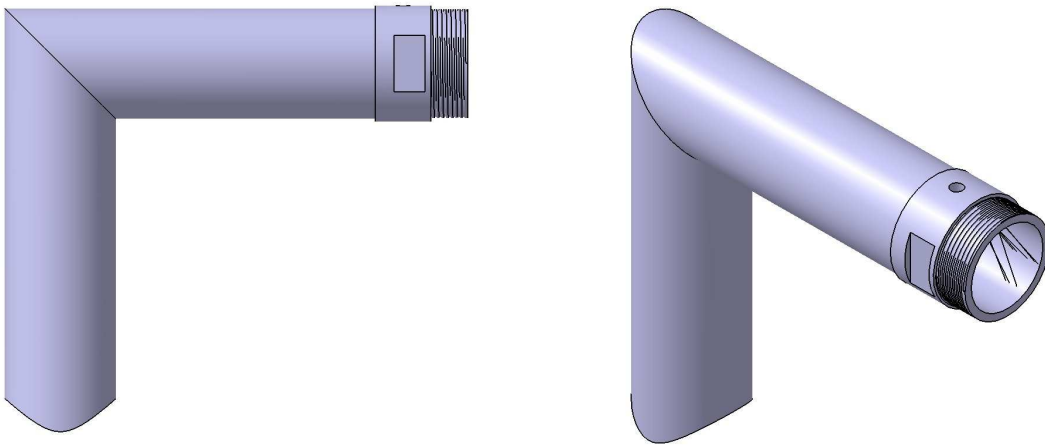
EUROTEC can also provide, upon customer request, other types of connections such as connections with nut, rotalock, folder....



MALE THREADED CONNECTION

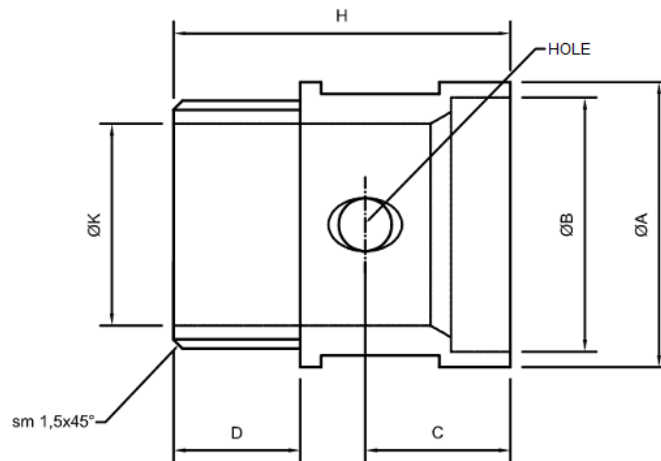
The brass male threaded connection is equipped with a hole used for venting or draining up to a size of 4". It has a cylindrical shape which allows it not to take up too much space unlike a hexagonal attachment, but it is still equipped with two millings on the sides which allow it to be gripped using a wrench for correct tightening. The external thread is conical while internally it is cylindrical and has the same nominal measurements as a cylindrical connection according to DIN/ISO 228.

So a DIN 2999-R-keg external thread can be screwed into an ISO 228-G internal thread.



Threaded Male Connection Whitworth Secondo DIN/ISO 2999

Cylindrical internal thread, conical external thread (cone 1:16)



DN	Inch	ØA	ØB	ØK	C(mm)	D(mm)	H(mm)	Hole
15	1/2"	28	22	14,5	24	15	49,7	1/8 GAS
20	3/4"	35	28	19,9	24,5	16,3	52	1/8 GAS
25	1"	42	35,8	25	25	19,1	54,1	1/8 GAS
32	1.1/4"	48	42,8	34	24,5	21,4	56,9	1/8 GAS
40	1.1/2"	54	48,8	40	24,5	21,4	56,9	1/8 GAS
50	2"	66	60,8	52	24	25,7	60,2	3/8 GAS
65	2.1/2"	82	76,8	66	27	30,2	69,5	3/8 GAS
80	3"	96	89,8	76	30	33,3	78,3	3/8 GAS
100	4"	114	108,8	100	30	39,3	86,3	3/8 GAS

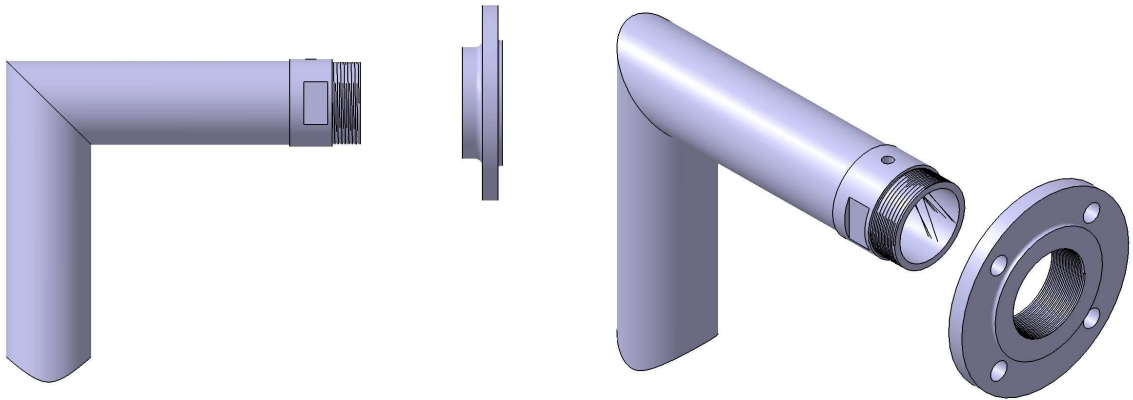


THREADED COLLAR FLANGE CONNECTION

The threaded collar flange (TYPE 13) with stepped sealing surface. It presents a thread inside the hole of the flange that fits the corresponding male thread on the pipe or fitting.

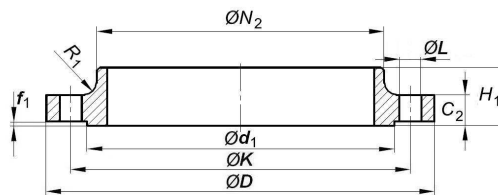
The threaded connection allows you to avoid welding in many cases. Also matches with our fitting male threaded.

They offer a reliable way to connect piping systems with various equipment, valves and other components, Flanges are the second most used joining method after welding.



Threaded Collar Flanges EN 1092-1 Tipo: 13 B1 - PN 16

B1 stepped sealing surface and phonographic groove - Cylindrical gas thread.

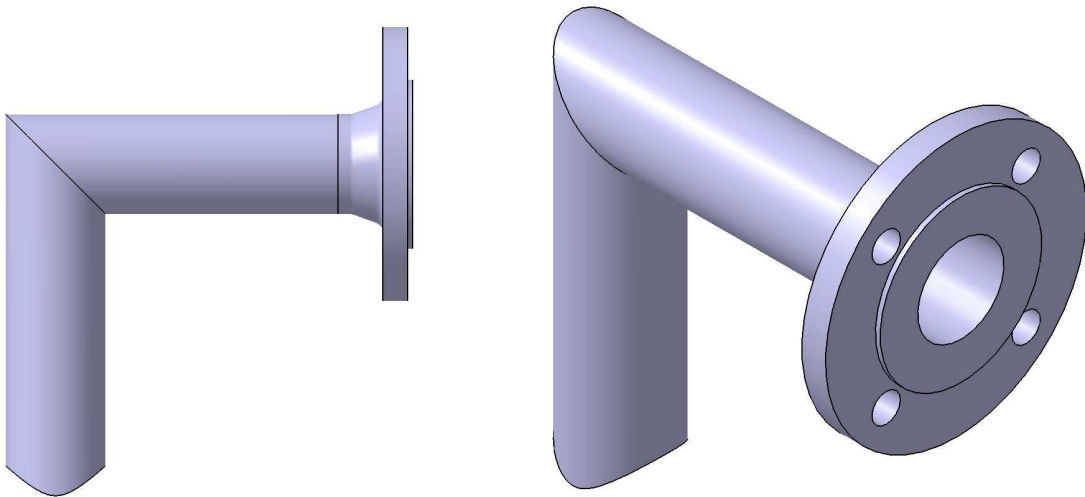


DN	Inch	ØD	ØK	ØL	Holes	Measure	C ₂	H ₁	Ød ₁	f ₁	ØN ₂	R ₁	Kg
15	1/2"	95	65	14	4	M 12	16	22	45	2	35	4	0,70
20	3/4"	105	75	14	4	M 12	18	26	58	2	45	4	1,01
25	1"	115	85	14	4	M 12	18	28	68	2	52	4	1,21
32	1.1/4"	140	100	18	4	M 16	18	30	78	2	60	6	1,76
40	1.1/2"	150	110	18	4	M 16	18	32	88	3	70	6	2,04
50	2"	165	125	18	4	M 16	18	28	102	3	84	6	2,85
65	2.1/2"	185	145	18	4/8*	M 16	18	32	122	3	104	6	3,53
80	3"	200	160	18	8	M 16	20	34	138	3	118	6	4,24
100	4"	220	180	18	8	M 16	20	40	158	3	140	8	4,90
125	5"	250	210	18	8	M 16	22	44	188	3	168	8	6,63

WELD COLLAR FLANGE CONNECTION

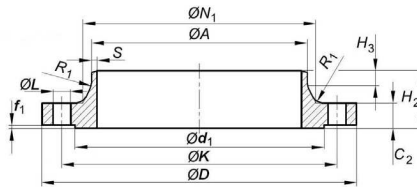
The collar weld flange (TYPE 11) with stepped sealing surface.

Simply match the flange to the outside diameter of the pipe you intend to connect, and make a butt welding usually used in high pressure and high temperature systems make them a leading choice for process piping.



Collar Flanges EN 1092-1 Type: 11 B1 - PN 40

B1 stepped sealing surface and phonographic groove. (Ex UNI 2284)

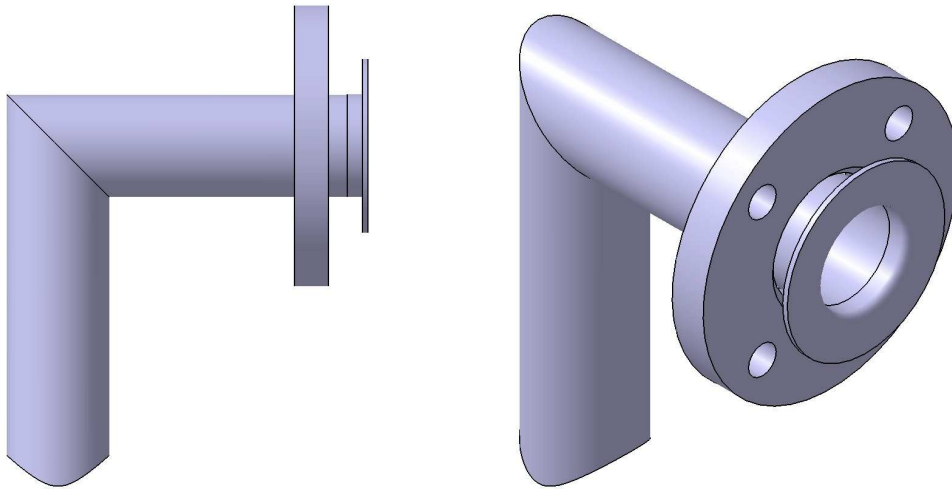


DN	Inch	ØD	ØK	ØL	Holes	Measure	ØA	C ₂	f ₁	H ₂	H ₃	ØN ₁	Ød ₁	R ₁	S	Kg
15	1/2"	95	65	14	4	M 12	21,3	16	2	38	6	32	45	4	2,0	0,75
20	3/4"	105	75	14	4	M 12	26,9	18	2	40	6	40	58	4	2,3	1,10
25	1"	115	85	14	4	M 12	33,7	18	2	40	6	46	68	4	2,6	1,28
32	1.1/4"	140	100	18	4	M 16	42,4	18	2	42	6	56	78	6	2,6	1,86
40	1.1/2"	150	110	18	4	M 16	48,3	18	3	45	7	64	88	6	2,6	2,16
50	2"	165	125	18	4	M 16	60,3	20	3	48	8	75	102	6	2,9	2,87
65	2.1/2"	185	145	18	8	M 16	76,1	22	3	52	10	90	122	6	2,9	3,71
80	3"	200	160	18	8	M 16	88,9	24	3	58	12	105	138	8	3,2	4,74
100	4"	235	190	22	8	M 20	114,3	24	3	65	12	134	162	8	3,6	6,42
125	5"	270	220	26	8	M 24	139,7	26	3	68	12	162	188	8	4,0	8,81



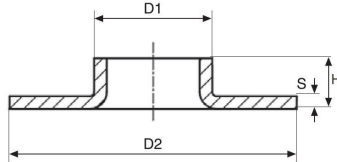
FREE FLANGE CONNECTION

The free flange (TYPE 02) characterized by a two-piece design, these are sliding flanges to be mounted in coupling to solder support plates. These characteristics make it ideal for replacements or in systems that require frequent maintenance.



Stainless Steel Support Folders

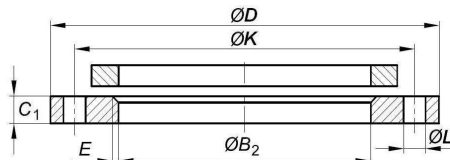
For butt welding.
 Dimensions compatible with UNI 6089, DIN 2642 and EN 1092 standards



DN	Inch	D1	D2	S	H
15	1/2"	21,3	43	2 / 3	6
20	3/4"	26,9	57	2 / 3	6
25	1"	33,7	67	2 / 3	8
32	1.1/4"	42,4	78	2 / 3	10
40	1.1/2"	48,3	88	2 / 3	10
50	2"	60,3	102	2 / 3	12
65	2.1/2"	76,1	122	2 / 3	12
80	3"	88,9	138	2 / 3	12
100	4"	114,3	158	2 / 3	12
125	5"	139,7	188	2 / 3	14

Free Flanges EN 1092-1 Type: 02 A - PN 16

With sliding hole diameter for iron pipes



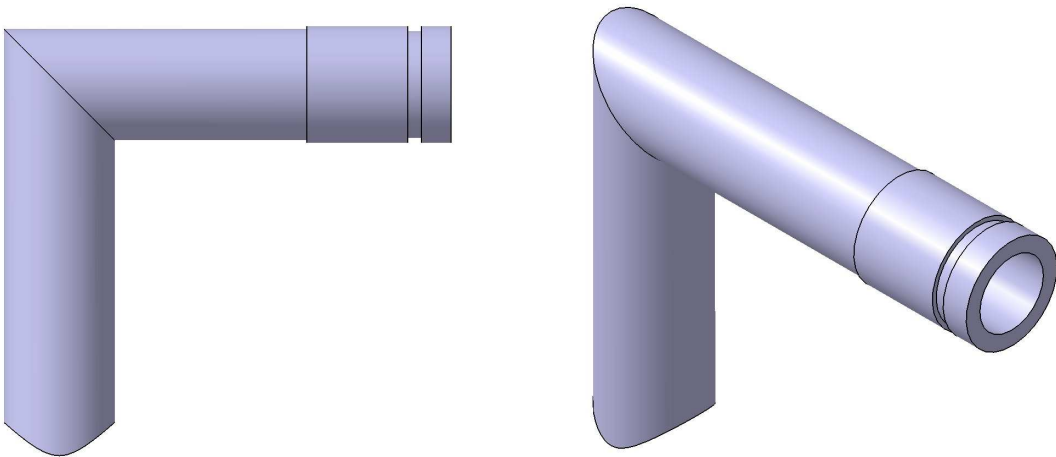
DN	Inch	ØD	ØK	ØL	Holes	Measure	ØB ₂	C ₁	E	Kg
15	1/2"	95	65	14	4	M 12	25,0	14	3	0,66
20	3/4"	105	75	14	4	M 12	31,0	16	4	0,91
25	1"	115	85	14	4	M 12	38,0	16	4	1,07
32	1.1/4"	140	100	18	4	M 16	47,0	18	5	1,79
40	1.1/2"	150	110	18	4	M 16	53,0	18	5	2,03
50	2"	165	125	18	4	M 16	65,0	20	5	2,52
65	2.1/2"	185	145	18	4/8*	M 16	81,0	20	6	3,12
80	3"	200	160	18	8	M 16	94,0	20	6	4,42
100	4"	220	180	18	8	M 16	120,0	22	6	4,15
125	5"	250	210	18	8	M 16	145,0	22	6	5,10



VICTAULIC CONNECTION

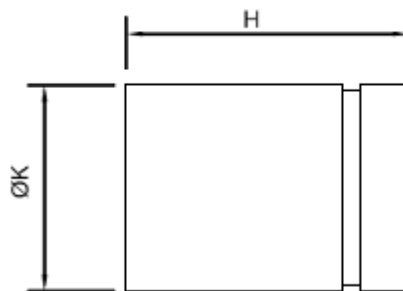
The Victaulic grooved pipe system is the most versatile, cost-effective and available. It is up to three times faster to install compared to welded systems, easier and more reliable than threaded or flanged systems, resulting in lower costs lower installation overalls.

It is used in various business sectors, including plant systems, clean water and waste water, industrial construction, naval industry, mining, oil, gas and chemicals, energy production.



Victaulic

Grooved pipe system Victaulic



DN	Inch	ØK	H(mm)
25	1"	33,7	70
32	1.1/4"	42,2	70
40	1.1/2"	48,3	70
50	2"	60,3	70
65	2.1/2"	76,1	80
80	3"	89,3	80
100	4"	114,3	100
125	5"	139,7	150

